

## WHAT CAN YOU DO TO HELP BEVERLY OBTAIN CPA FUNDS?

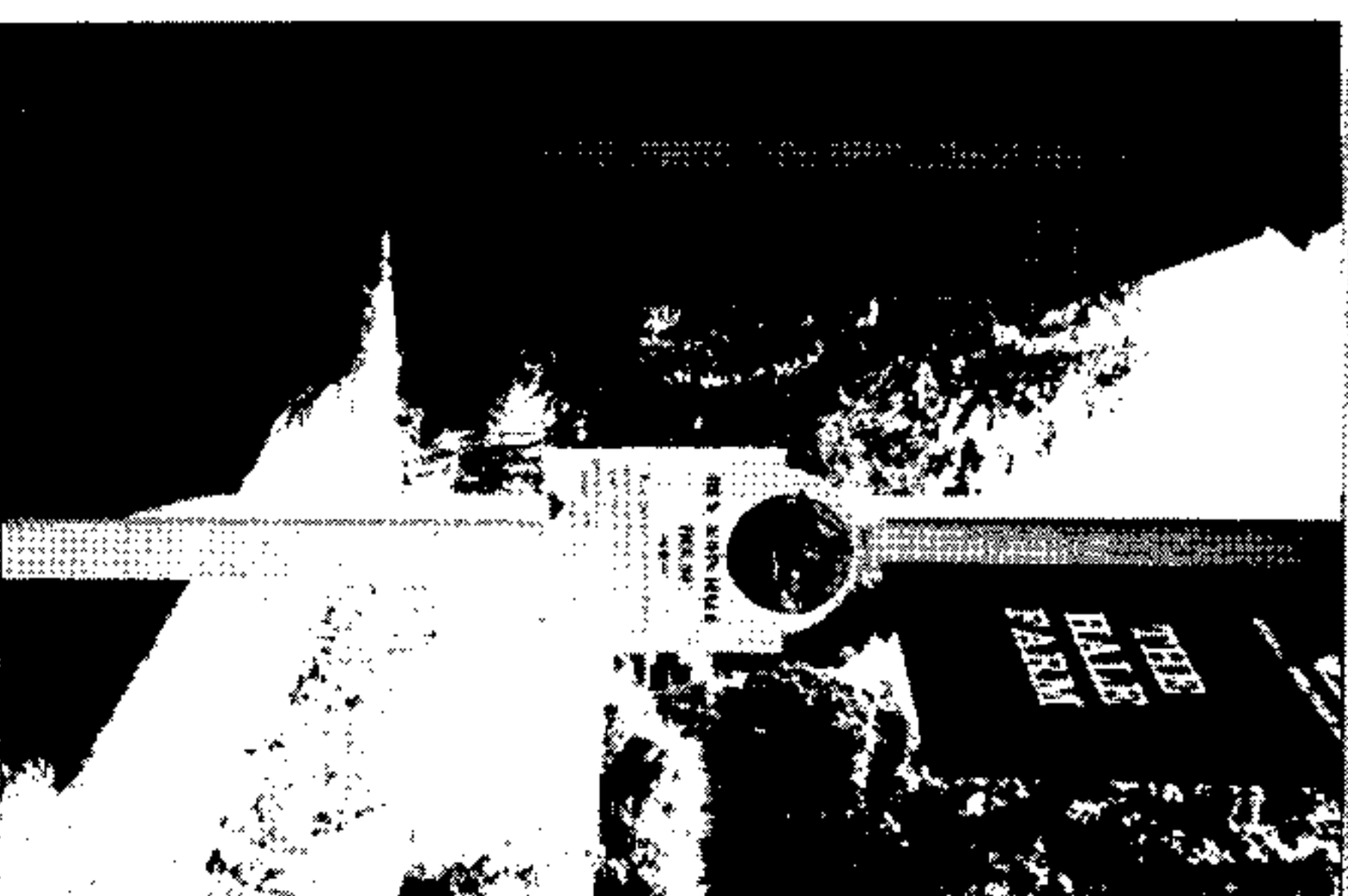
It is important that Beverly approve the CPA as soon as possible. The first year of state funding will be divided among those towns who have passed the referendum. Because fewer communities will have passed the CPA in the early years, fewer communities will be competing for the state funds, making each community's share of matching funds larger. Beverly can gain financially from passing the CPA this year.

Yes!

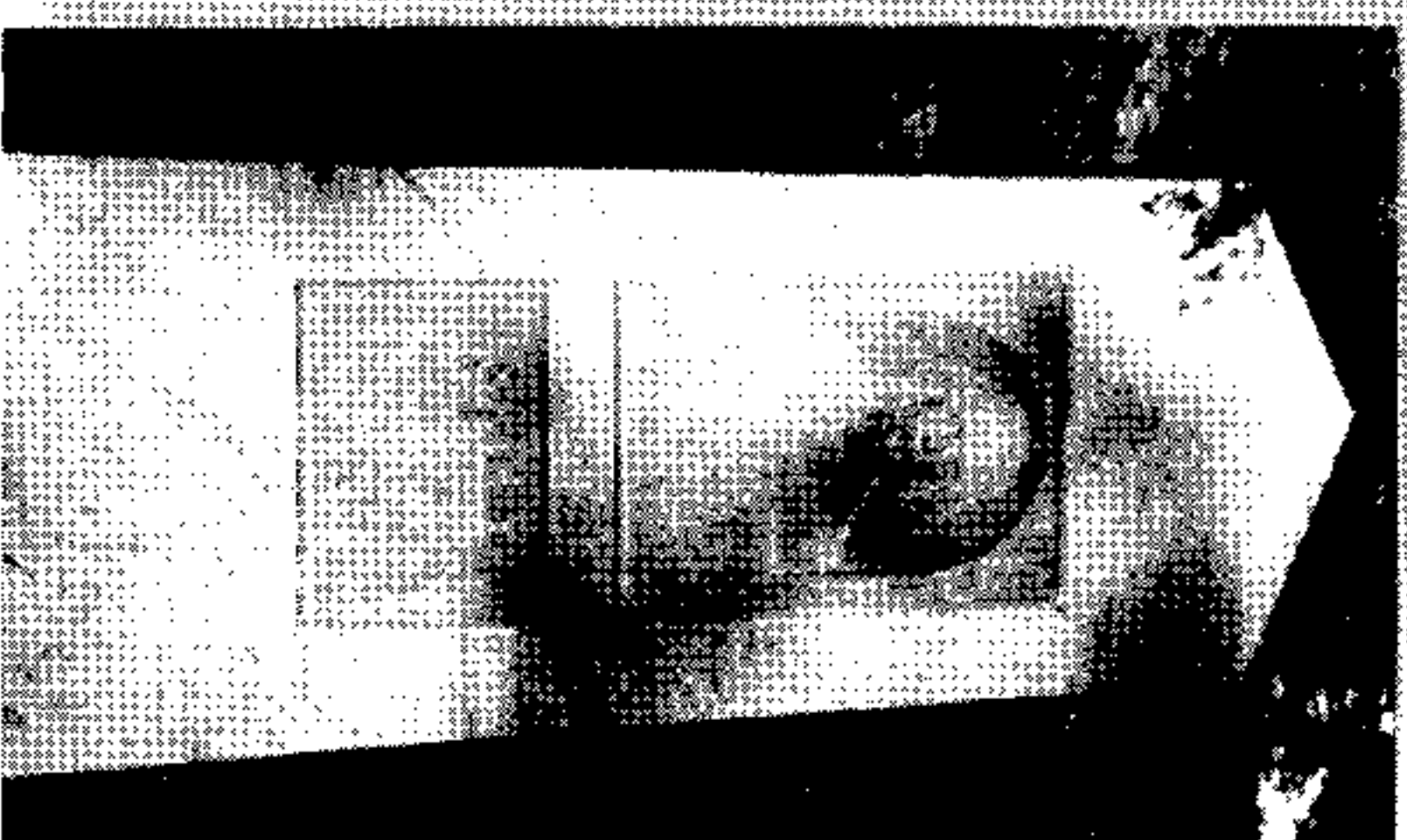
Vote yes on the CPA question that will appear on the November ballot. Pass this informational brochure on to a neighbor or friend and ask them to vote yes.

To arrange for an informational presentation, volunteer to help educate Beverly voters, or request a brochure contact Beverly Citizens for the Community Preservation Act at 978.921-4705 or e-mail: [beverlyforcpa@aol.com](mailto:beverlyforcpa@aol.com)

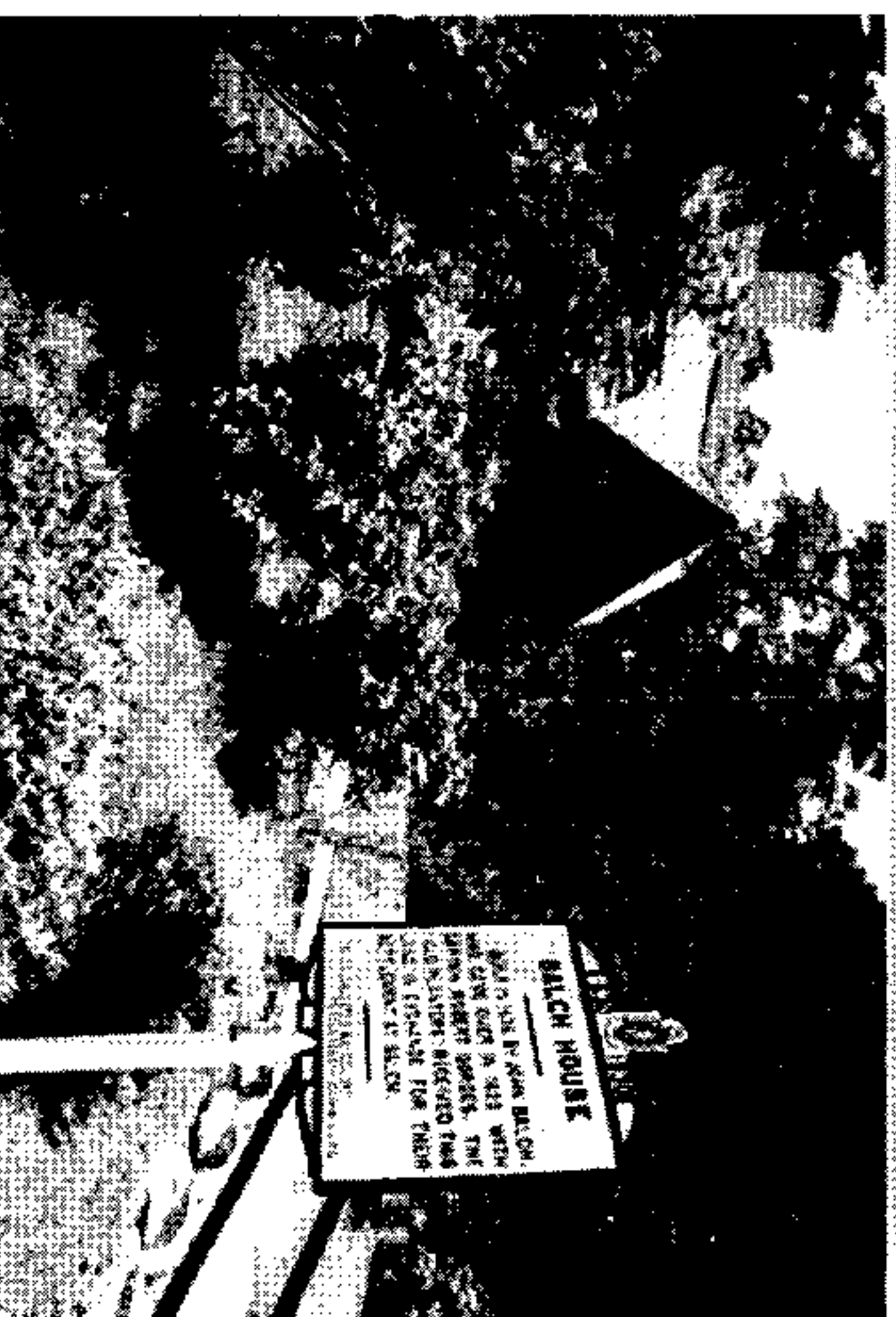
Additional information about the CPA is available on these web sites:  
[www.state.ma.us/envir/cpa/](http://www.state.ma.us/envir/cpa/)  
[communitypreservation.htm](http://communitypreservation.htm) and  
[www.communitypreservation.org](http://www.communitypreservation.org)



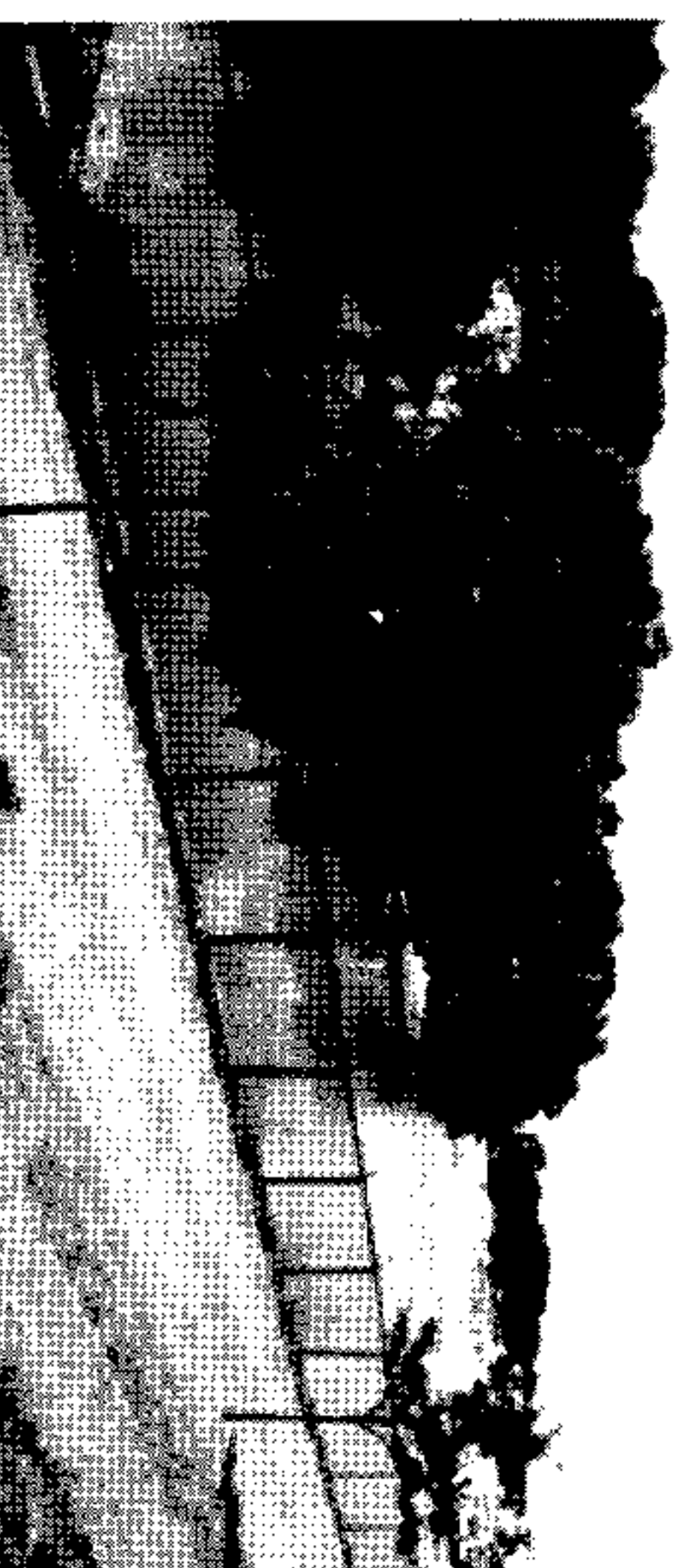
The Hale Farm



Sally Mulligan Conservation Area



The Balch House



Bass River Access

# The COMMUNITY PRESERVATION ACT

Vote Yes on Question 1 on November 6

Lynch Park Rose Garden Tea House

A Guide for Beverly Residents

## WHAT IS THE COMMUNITY PRESERVATION ACT (CPA)?

The Community Preservation Act (CPA) is a newly established, state-authorized funding mechanism for local open space, historic preservation, and affordable housing initiatives. The CPA allows cities and towns to raise revenue through a surcharge on property tax bills, which is matched by the state to provide funds back to the local government for use on local quality-of-life projects.